



JAZZ
IMAGING
GETTING STARTED



Getting Started

Welcome to Jazz Imaging. Thank you for your investment in the Jazz Imaging System. We hope you will have an outstanding experience with our products and services.

Everything you need to install your JAZZ Solo sensor is provided on the USB-stick, shipped in the blue Jazz SOLO sensor box. Additional information can be found on our website.

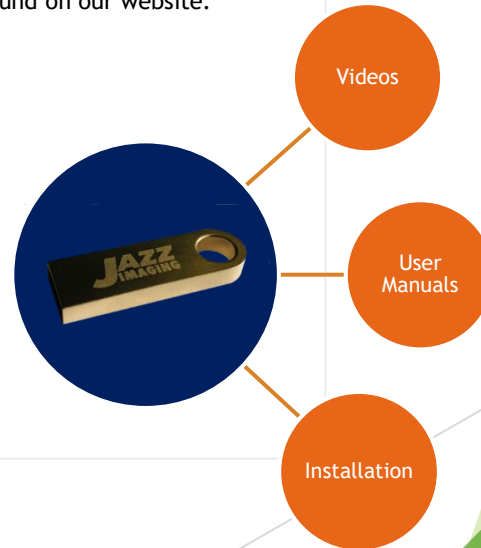
www.jazzimaging.com/training

If you need assistance to install your Jazz SOLO sensor you can reserve a convenient time for installation assistance from a Jazz customer care team member through our website.

<http://www.jazzimaging.com/calendar>

If you have any other questions or concerns, feel free to contact us at (567) 234-5299 ext. 300 or email support@jazzimaging.com

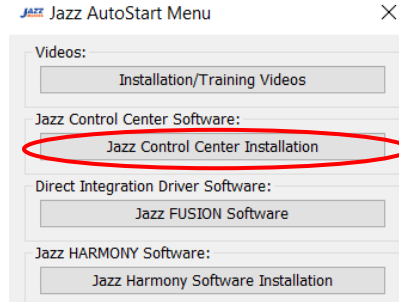
Your Jazz customer care team



Jazz Control Center Installation is required on all workstations where images will be acquired with the Jazz SOLO sensor.

- a. Insert the USB key into any open USB port on the computer.
- b. If the Jazz AutoStart Menu screen does not automatically start, open the file explorer window then go to the drive associated with the Jazz USB (usually D: or E:) and double click on “JazzAutoStart.exe” to run it.
- c. In Jazz AutoStart Menu, click on the “Jazz Control Center Installation” button under Jazz Control Center Software then follow the prompts on the screen to finish the installation.

STEP 1: Installing Jazz Control Center



- d. Upon completion and restarting the computer, a Jazz Control Center shortcut is created on the desktop, the Jazz Control Center will automatically start and a mini Jazz Control Center icon also starts on the bottom right of the system tray.

- a. Connect the sensor to your PC. A notification will be displayed showing that a the sensor has been detected. If no sensor notification is shown, check that the small USB-C connector is firmly connected to the back connector at the end of the sensor. Your sensor comes pre-licensed for immediate use.
- b. You can verify the sensor and license status of connected sensors at any time on the Jazz Imaging Control Center Home Screen. To bring up the Jazz Imaging Control Center Home Screen, click on the mini Jazz Control Center icon on the bottom right of the system tray.

STEP 2: Verifying the Jazz SOLO sensor



System tray icon

Sensor Name	Serial No.	Unique ID	Status	License Status
Jazz SOLO X-Ray Sensor	2001126	843208FE14204241	Sensor OK!	Demo until 2/11/2021

Recommended Exposure time settings for X-Ray generator

60kV
65kV
70kV

0.130 - 0.190 | 0.090 - 0.120 | 0.070 - 0.100 | 0.090 - 0.120 | 0.130 - 0.190

Adult
Child

Connected Sensors: 2001126

Jazz Imaging Control Center Home Screen

IMAGING SOFTWARE

Don't see your imaging software listed or not sure?
Please contact us at (567) 234-5299 ext. 300

If you have one of the following...



evidentia^{ie}



PLANMECA

TigerView

XDR[®]



...OR OTHER TWAIN

YOU'RE DONE!

Open your software and
take images using the
TWAIN driver

If you have one of the following



DENTRIX ASCEND

DEXIS[™]



schick
CDR Dicom



VIXWIN[™]
PLATINUM



GO TO PAGE 5

If you don't have imaging software

:

or you have



:

or you

want to upgrade to

HARMÖNY

GO TO PAGE 6

Follow these steps if you have one of the Imaging Software applications below:

Be sure to close all your existing practice management and imaging software prior to installing any Jazz FUSION Software.

STEP 3: Installing Jazz SOLO with FUSION for use in:

- Double click on “JazzAutoStart.exe” in the USB key.
- Watch the installation video showing the installation process of Jazz SOLO in the imaging software you are currently using. The installation videos can be found in the ”Installation Videos” section of the USB key.
- In the Jazz AutoStart Menu, click on “Jazz FUSION Software” then choose the “FUSION” associated with your imaging software to install it.



DENTRIX ASCEND

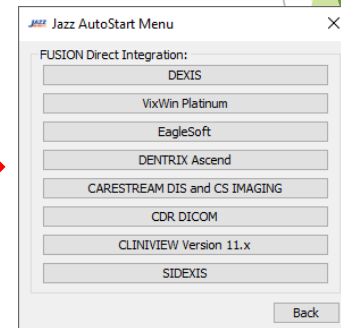
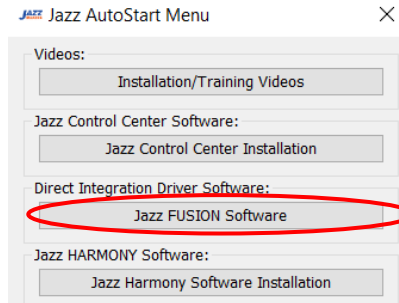
DEXIS



schick
CDR Dicom

Sirona
SIDEXIS

VIXWIN
PLATINUM



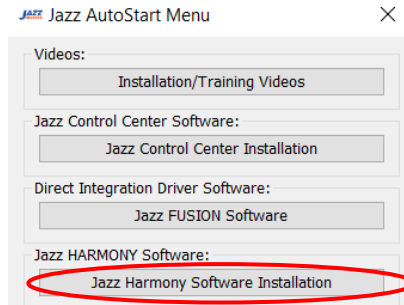
- Follow the installation steps on screen.
- Use the Jazz SOLO sensor in your current imaging software application, just like you used your original sensor.



Follow these steps if you need imaging software and either purchased or want to install trial Jazz Harmony Imaging Software.

- a. Double click on “JazzAutoStart.exe” in the USB key.
- b. If you need to install HARMONY, select “Jazz Harmony Software Installation” section of the USB key. Follow the installation steps.

STEP 4: Installing Jazz SOLO for use in:



- c. For APTERYX, follow the steps in the Installation Video to install the SOLO driver using the link found by selecting “Latest Apteryx Extension for Jazz Solo”.
- d. You can now use the Jazz SOLO sensor in the HARMONY or APTERYX imaging software application.



770 CHARCOT AVE

SAN JOSE, CA 95131

WWW.JAZZIMAGING.COM

TEL. (567) 234 5299 ext. 300

Appointments: <http://www.jazzimaging.com/calendar>

Training/Support: <http://www.jazzimaging.com/training>

Email: support@jazzimaging.com