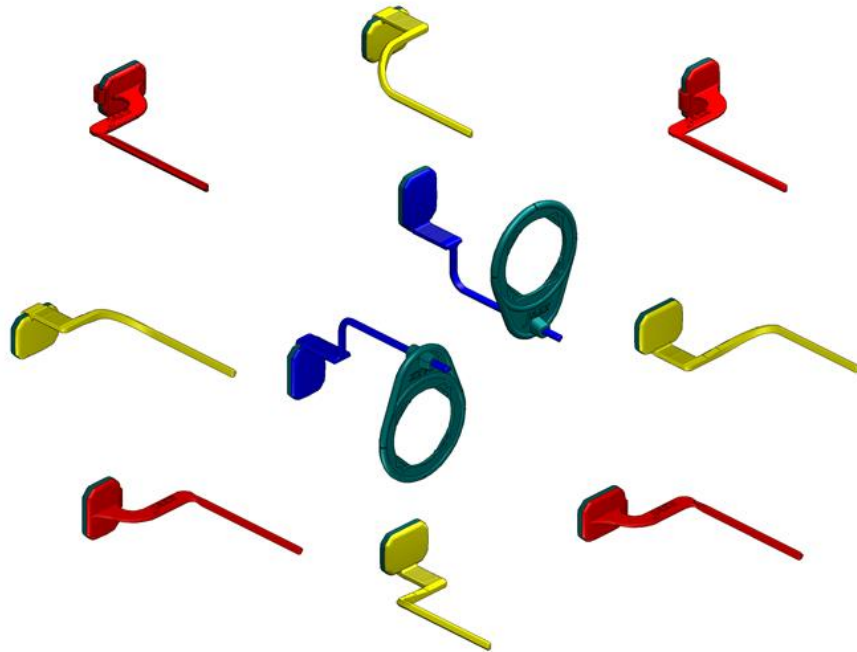


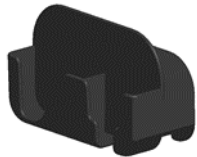
JAZZ
IMAGING

**EASY
POSITIONING
SYSTEM**

JAZZ Imaging Easy Positioning System for JAZZ SOLO Sensors



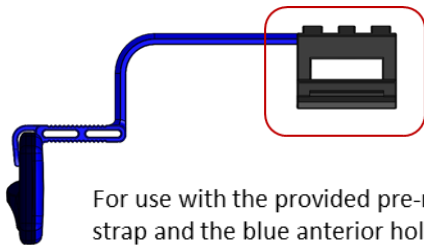
JAZZ Wall Mount



The JAZZ IMAGING Wall Mount is supplied to store the Sensor and USB-conconnector. Fold up the sensor cable in one (max. two) large loops and place the sensor cable in the designate area behind the sensor und USB/conconnector.

For detailed instructions on how to use the JAZZ Wall Mount please refer to the JAZZ SOLO Dental Imaging Sensor User Guide.

JAZZ Dose Optimization Tool



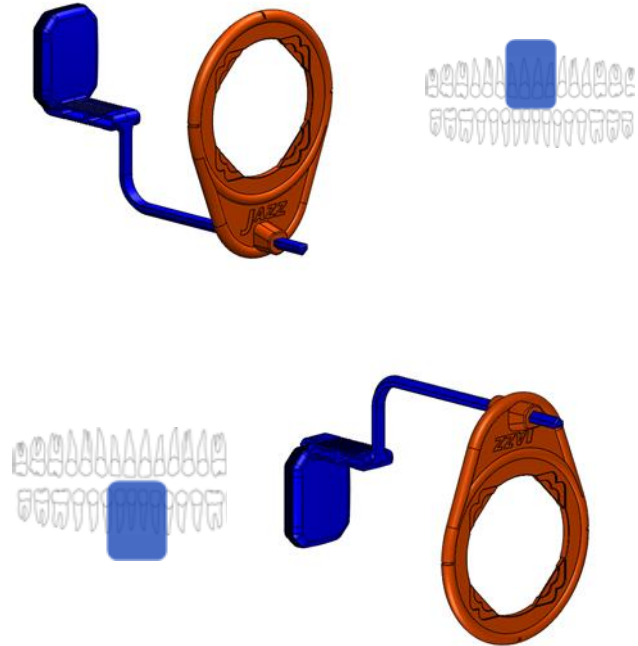
For use with the provided pre-mounted Velcro strap and the blue anterior holder.

For detailed instructions on how to use the JAZZ Dose Optimization Tool please refer to the JAZZ SOLO Dental Imaging Sensor User Guide.

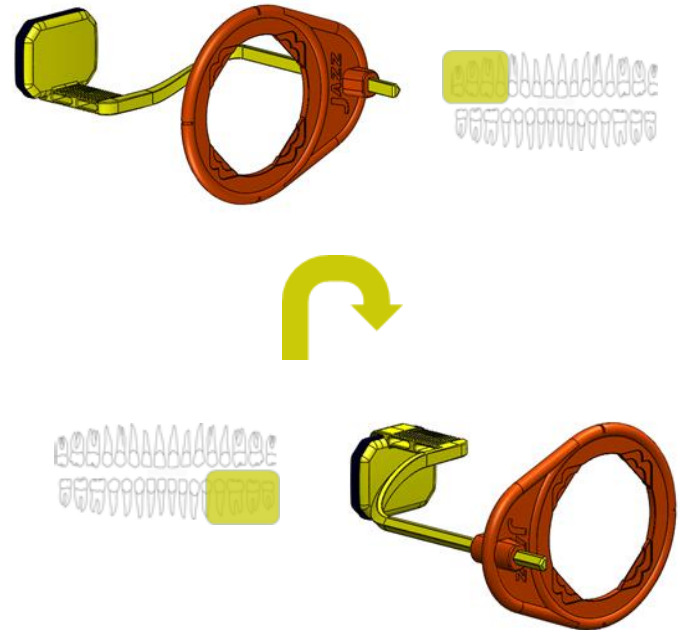
Item Numbers

Description	Color	Item #	REF
ANTERIOR (Upper / Lower)	Blue	21-013	
POSTERIOR Upper Right / Lower Left	Yellow	21-015	
POSTERIOR Upper Left / Lower Right	Yellow	21-014	
BITEWING (Horizontal) Left / Right	Red	21-016	
BITEWING (Vertical) Left / Right	Red	21-017	
POSITIONING RING	Orange	21-012	
JAZZ Wall Mount	Black	21-030	
JAZZ Dose Optimization Tool	Black	50-004	

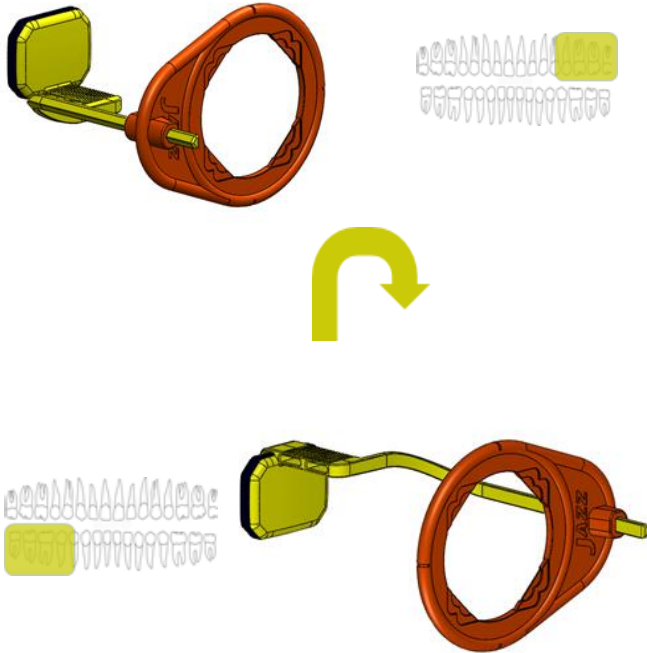
**ANTERIOR HOLDER
(Upper / Lower)**



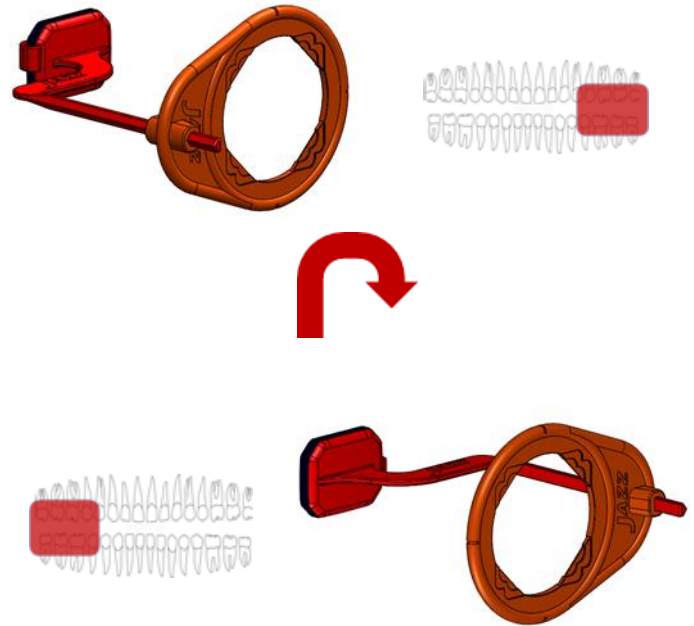
**POSTERIOR HOLDER
(Upper Right / Lower Left)**



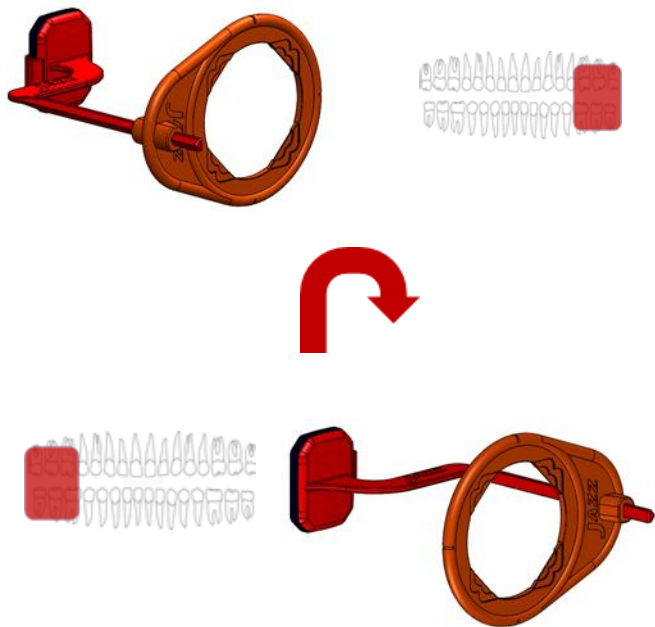
POSTERIOR HOLDER
(Upper Left / Lower Right)



BITEWING (Horizontal) HOLDER
Left /Right



BITEWING (vertical) HOLDER Left / Right



POSITIONING RING (FOR ALL HOLDERS)



The orange positioning ring is designed for use with any of the provided JAZZ holders and will always ensure that the sensor imaging area is located in the center of the positioning ring.

1. Cleaning and Sterilization

- i. Prior to use, please ensure that all pieces of the JAZZ Easy Positioning Kit that were in contact with the patient are disinfected or autoclaved.
- ii. Always cover the sensor with a disposable hygienic protective sheath before inserting the sensor onto the holder.
- iii. After patient use remove the sensor from the holder.
- iv. Remove the disposable hygienic sheath from the sensor and discard the sheath.
- v. After use, all parts of the positioning system must be disinfected or sterilized. **DO NOT AUTOCLAVE THE SENSOR.**
- vi. Clean and rinse components with hot water and soap.
- vii. Put each individual component in a separate sterilization pouch and place in the middle tray of the autoclave, away from autoclave walls and heating elements. Plastic parts must be in a separate pouch from metal objects to avoid melting or warping.
- viii. Cycle per autoclave manufacturer's instructions.
 - DO not exceed 270° F (132° C).
 - DO NOT use special application or ultrasonic cleaners.
 - DO NOT CHEMICLAVE or DRY-HEAT STERILIZE.
 - DO NOT cold sterilize.

NOTE: Even when following the sterilization protocols described above, sterilization will generally shorten the life time of the JAZZ holders and rings. Therefore your JAZZ holders should be replaced periodically.

2. Assembly and use instructions

- i. Depending upon the tooth region you wish to x-ray, choose and prepare the appropriate sensor holder by sliding the orange colored aiming ring onto the holder.

NOTE: The holders are designed so that each single holder can be used with the same single orange ring and the sensor will always be centrally aligned.

- ii. Leave the ring at the far end of the holder bar to enable easier positioning in the patients mouth.
- iii. Cover the sensor with a disposable hygienic protective sheath.
- iv. Place the sensor into the holder.
- v. Locate the sensor and positioner in the patient's mouth and have the patient close slowly and bite lightly onto the holder bite block.

NOTE: For detailed instructions on how to use the holders in the different anatomical regions, please refer to the JAZZ SOLO Dental Imaging Sensor User Manual.

- vi. Slide the orange positioning ring as far forward (towards the patient) as possible without making contact with the patients face.
- vii. Align the x-ray tube to the positioning ring.
- viii. Ensure that the imaging software has been started and is ready to acquire an image.
- ix. Take exposure.
- x. If needed, adjust the holder for the next desired position.



770 CHARCOT AVE

SAN JOSE, CA 95131

WWW.JAZZIMAGING.COM

TEL. (567) 234 5299 ext. 300

Appointments: <http://www.jazzimaging.com/calendar>

Training/Support: <http://www.jazzimaging.com/training>

Email: support@jazzimaging.com